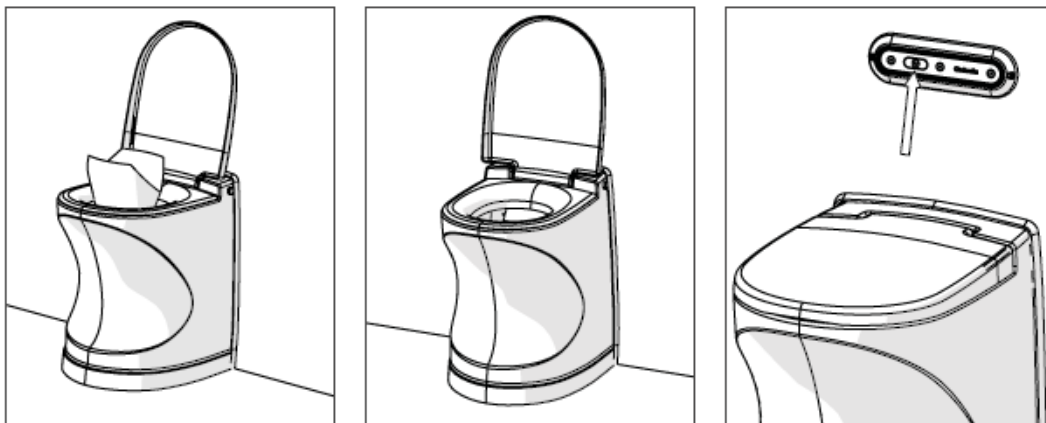


The Cinderella is a tidy, modern, eco-friendly machine for turning WC waste into ash!

## The Cinderella **WATERLESS** Toilet Solution – User Guide

Before use, first insert the special wax-paper liner shaped to fit into the bowl, to keep everything clean and contents will slide into the burning chamber.



- **Insert the liner in the correct orientation.**
- **One user, one bag.**
- **Take a seat and do your 'business'**
- **Initiate a burn after each use. Push START-Incinerate Button.**
- **Do not insert a new liner before it is needed.** The wax liner might stick to the metal bowl.
- **Small children.** Add a cup of water into the liner so that it has enough weight to glide away.
- **Check after each flush that the steel bowl is clear.**
  - ✓ Lift the lid and check that all the bag has gone, and not caught by the closing mechanism.
  - ✓ If part of the bag is visible, close the lid and press the flush button again.
  - ✓ Check and if the paper is not released, add a cup of water into the bowl and flush once more. This will normally clear the liner leaving the toilet clean and ready for the next user.
- **If several people are expected to use the toilet pre-heat it** in the morning, before first use or on occasions when several people are expected to use the toilet within a short time interval.
  - **To pre-heat** start an incineration process without inserting any liner or waste.
  - Lift the lid, close the lid, press the start button, and wait 7-8 minutes before first use. Insert liner, use toilet and press Start button. Delay second use for another 10 minutes.
- **Continuous use** The toilet is designed for 3 – 4 users an hour. The burning process needs a few minutes to lower the waste in the ash container, so allow 10 minutes to pass between visits when used continuously.

## Information about your Cinderella Travel Incineration Machine

Cinderella Travel is designed to incinerate after every use (but small amounts may be combined).

**Cinderella Travel Burning Cycle** lasts for about 70 minutes. Once started a cold **catalyst becomes fully functional after 7-8 minutes** and helps to remove odor from the exhaust air. Once complete the gas supply is stopped and the machine cools to ambient temperature using the 12v cooling fan only.

**Further uses at operating temperature increases the efficiency of the unit.** Only the burning time of first use will be added to the second, with the catalyst immediately effective.

**Ashes** should be grey, sterile and inert. A **normal mixture** of liquids and solids will create grey ashes.

When the proportion of urine is 60 % + of the total, **the residue will not result in grey ashes.** Crystals will form on the surface of the ash and sides of the steel insert with a thin black layer beneath the ash. This is from the liner material which partly covers the base of the steel insert. This is normal and not an indication of a bad incineration process.

To clean the steel insert, first empty the ash. Then pour in hot water and let it stand for 15 minutes. The crystals will dissolve and soften so a hard brush will easily remove any residue. Rinse the last sandy material from the insert, leaving it clean for next use. This needs only to be done periodically, but frequent removal of ash, which is a superb insulator, increases the efficiency of incineration. **We recommend emptying the ash container frequently.**

**Smoke and Smell** are captured by the catalyst once at working temperature as described above. All that should escape through the flue is hot air, which is the only smell detected.

Where the exhaust cowl is at a low level the exhaust air smell may be detectable. A higher exhaust point will reduce this. Air from the toilet before the catalyst has reached working temperature, 7-8 minutes, may also smell if material is being heated to burning temperature.

**Maintenance** is very simple on the Cinderella Travel as components are accessible once the cover is taken off. Backflush the catalytic converter and clean the exhaust fan if needed. These parts are expensive to replace but easy to keep clean. Monitor their condition and maintain regularly. Pay particular attention to the catalyst and keep it clear. How to clean the catalyst is described in the Owner's Manual provided with the toilet.

Occasionally put a litre of hot water into the ash container and go through a burn cycle. This will act like a 'steam clean' for the machines working components like the catalytic converter.

**Do not use chlorine based or abrasive cleaning agents** to clean the unit.

**Servicing** involves general cleaning of the system and check up of the the spark electrode, as well as sanding the top of the ash container insert. This should be done once or twice a year for units used in everyday living quarters. For leisure time users the usual service interval varies between every 3 to 6 years.

For more information contact UK Distributor:

[www.pumptechnology.co.uk](http://www.pumptechnology.co.uk)

[support@pumptechnology.co.uk](mailto:support@pumptechnology.co.uk) or 01189821555